

The Design Wall BOM - September

Fabric Requirements:

White Fabric:

- (1) 15 1/2" x 5 1/2" piece
- (2) 10 1/2" x 5 1/2" pieces
- (5) 5 1/2" squares
- (2) 5 7/8" squares

Dark Grey Fabric:

- (2) 5 1/2" squares

Green Fabric:

- (4) 5 1/2" square

Lime Green Fabric:

- (2) 5 7/8" squares

Orange Fabric:

- (2) 5 7/8" squares

Grey Fabric:

- (1) 5 1/2" square
- (1) 10 1/2" square

Cobalt Fabric:

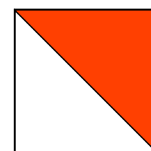
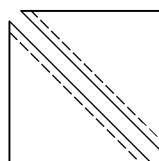
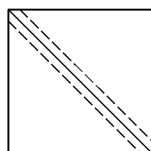
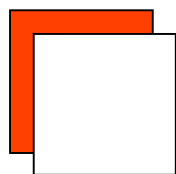
- (2) 5 7/8" square

Turquoise Fabric:

- (4) 5 1/2" square

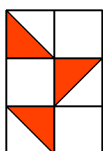
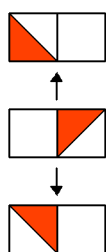
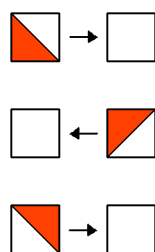
Orange/White Half Square Triangles: (make 4 units)

Place one 5 7/8" orange square with a 5 7/8" white square. Mark a diagonal line (corner to corner) on the white square. Sew 1/4" away from the drawn line on each side. Use a rotary cutter and ruler to cut on the drawn line. Press the seams towards the orange fabric.



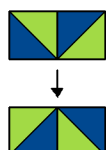
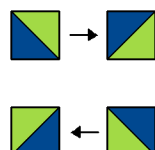
Make 4 units.
Unit final size: 5 1/2" square.

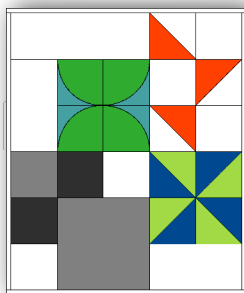
Piece the block following the diagram below.



Cobalt/Lime Green Half Square Triangles: (make 4 units)

Follow the "Orange/White Half Square Triangles" instructions. Piece the block following the diagram below.



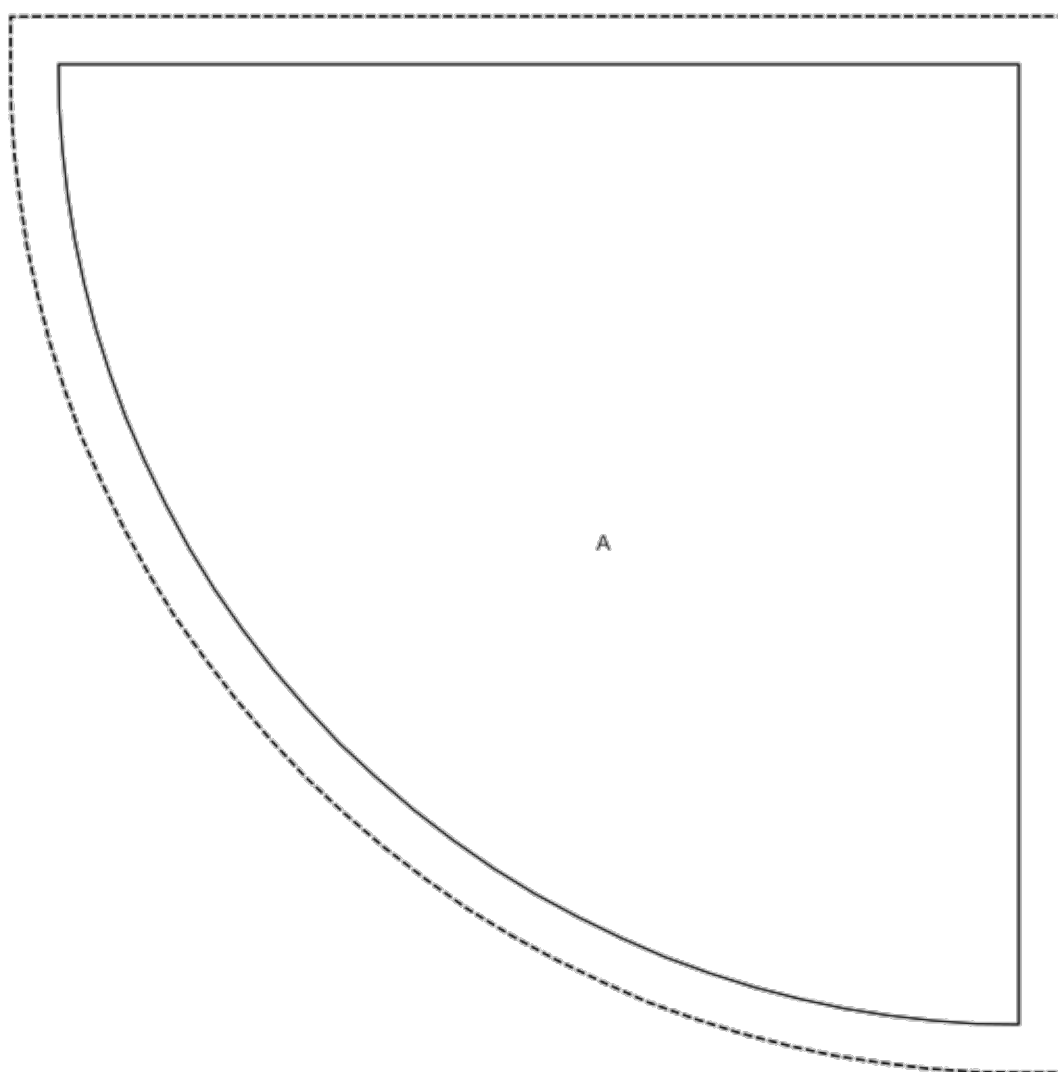


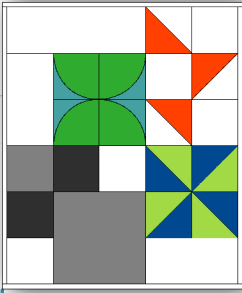
The Design Wall BOM - September

Turquoise/Green Curved Block:

Use the **Template A** to trace and cut the 4 green fabric 5 1/2" squares.

1 inch
100% print scale



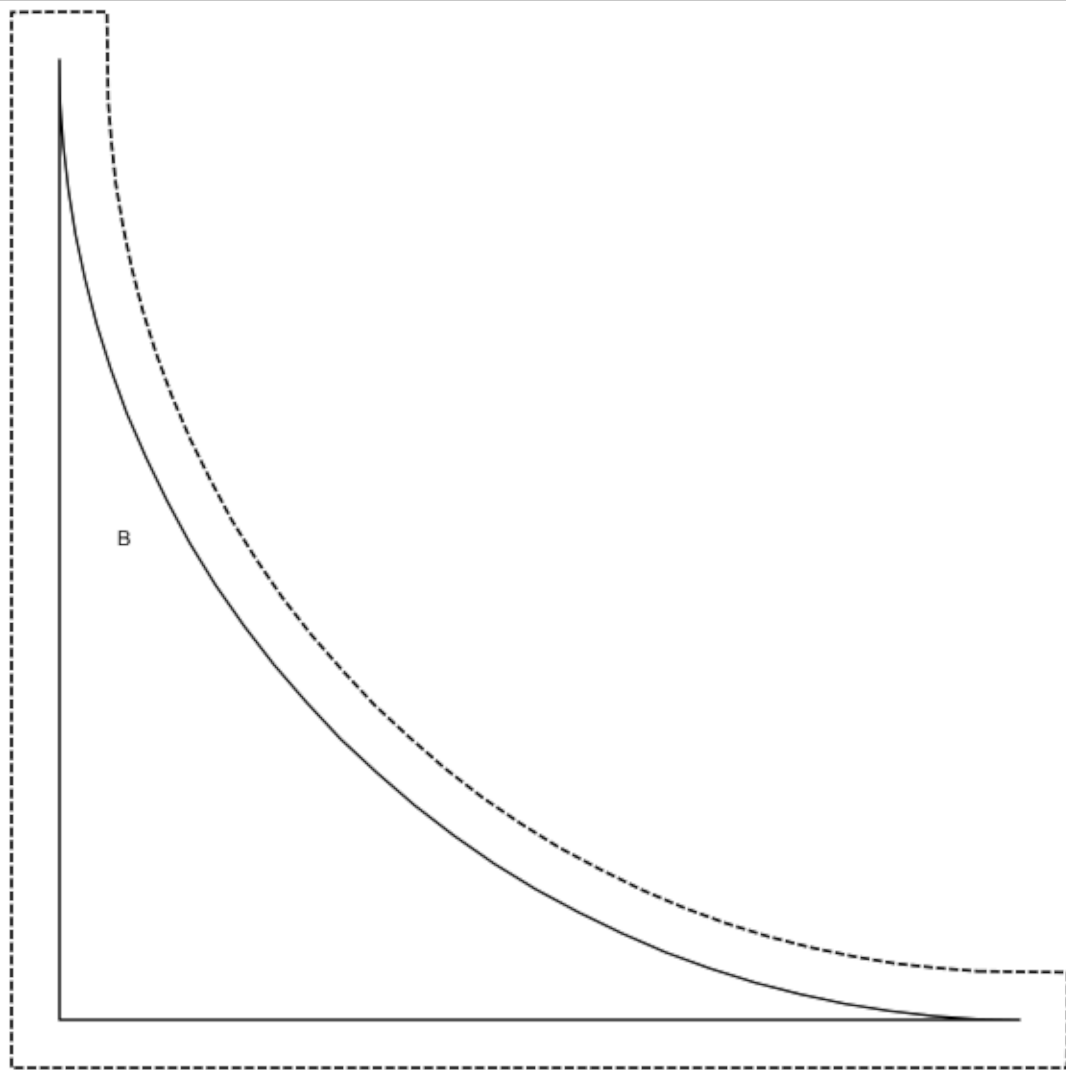


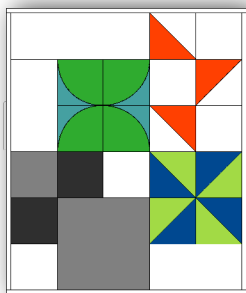
The Design Wall BOM - September

Turquoise/Green Curved Block:

Use the **Template B** to trace and cut the 4 turquoise fabric 5 1/2" squares.

1 inch
100% print scale

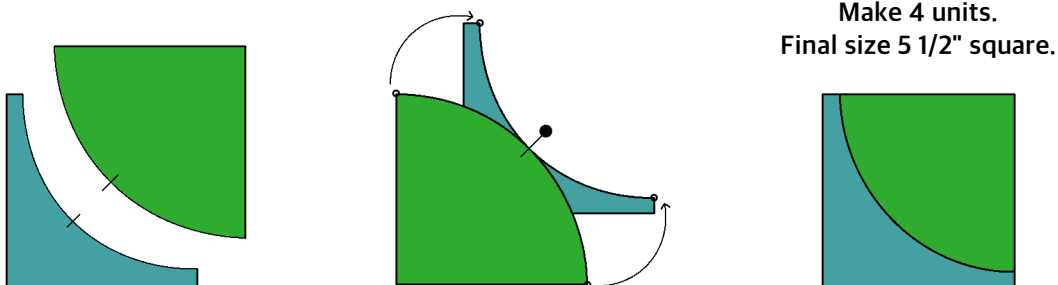




The Design Wall BOM - September

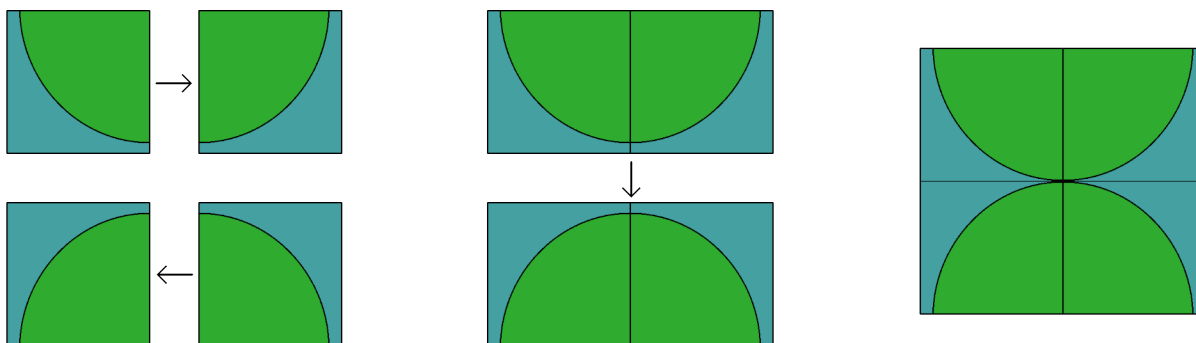
Turquoise/Green Curved Block:

Mark the center on the curved side in both of the templates. Align template A with template B matching the center marks and place a pin. Place matching pins in both corners of the curve and also some pins following the curve shape. Follow the diagram below:

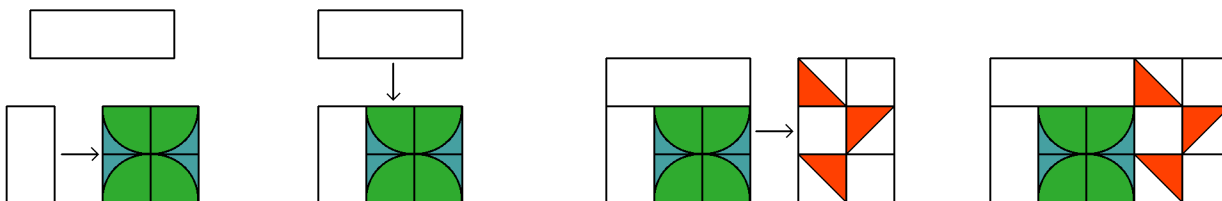


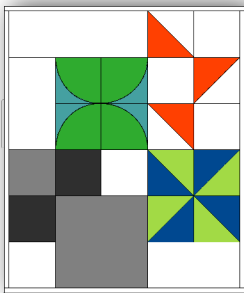
Assembly:

Follow the diagram below.



Take the 15 1/2"x 5 1/2" white fabric piece and one 10 1/2" x 5 1/2" white fabric piece and sew with the turquoise/green curved block, like the diagram below. Piece with the Orange/White Half Square Triangles Block.





The Design Wall BOM - September

Block Assembly:

Take one 5 1/2" grey fabric square, one 10 1/2" grey fabric square, two 5 1/2" dark grey fabric square, two 5 1/2" white fabric square and piece them together following the diagram below.

